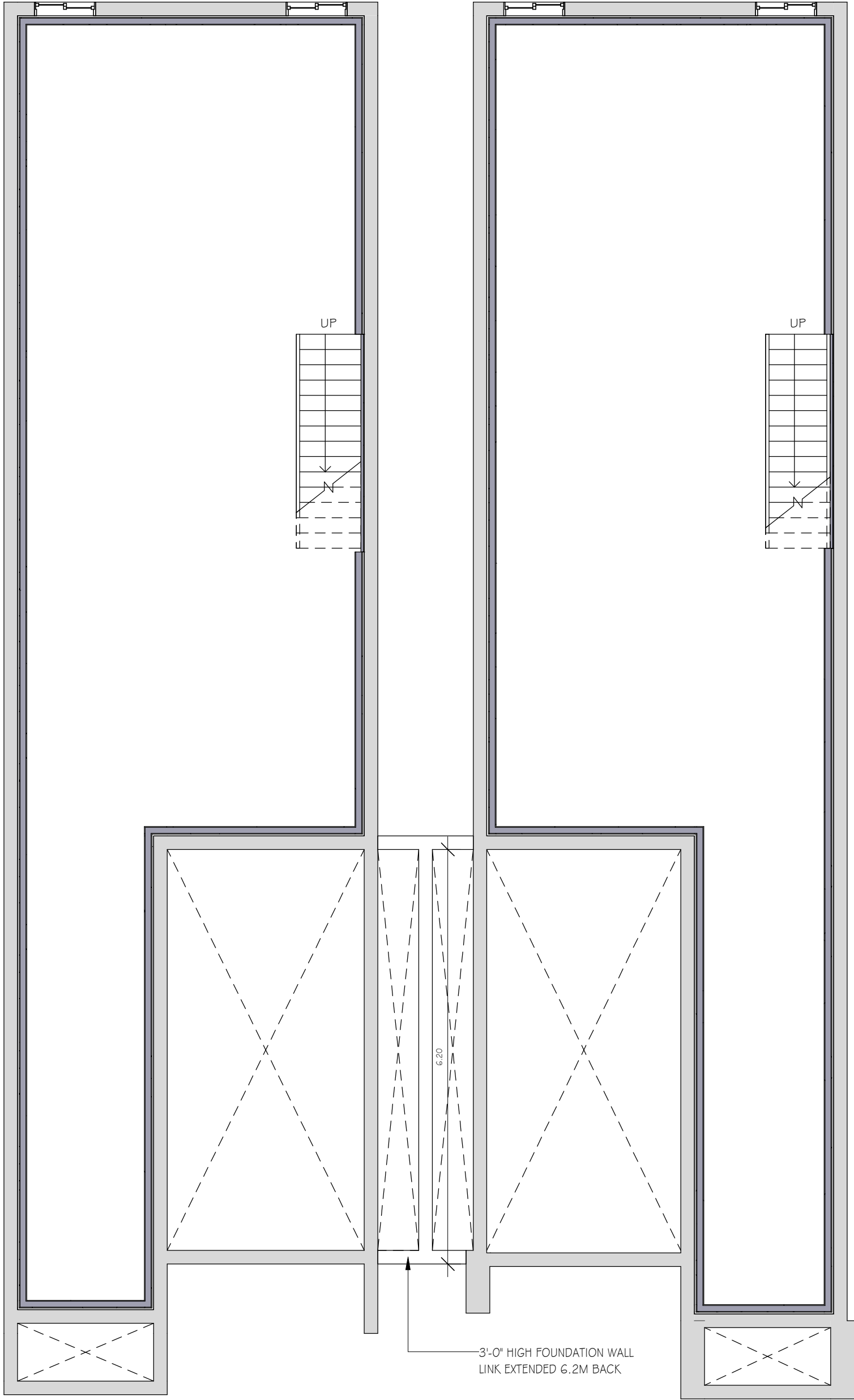


LINKED DETACHED

BASEMENT



PART 2

PART 1

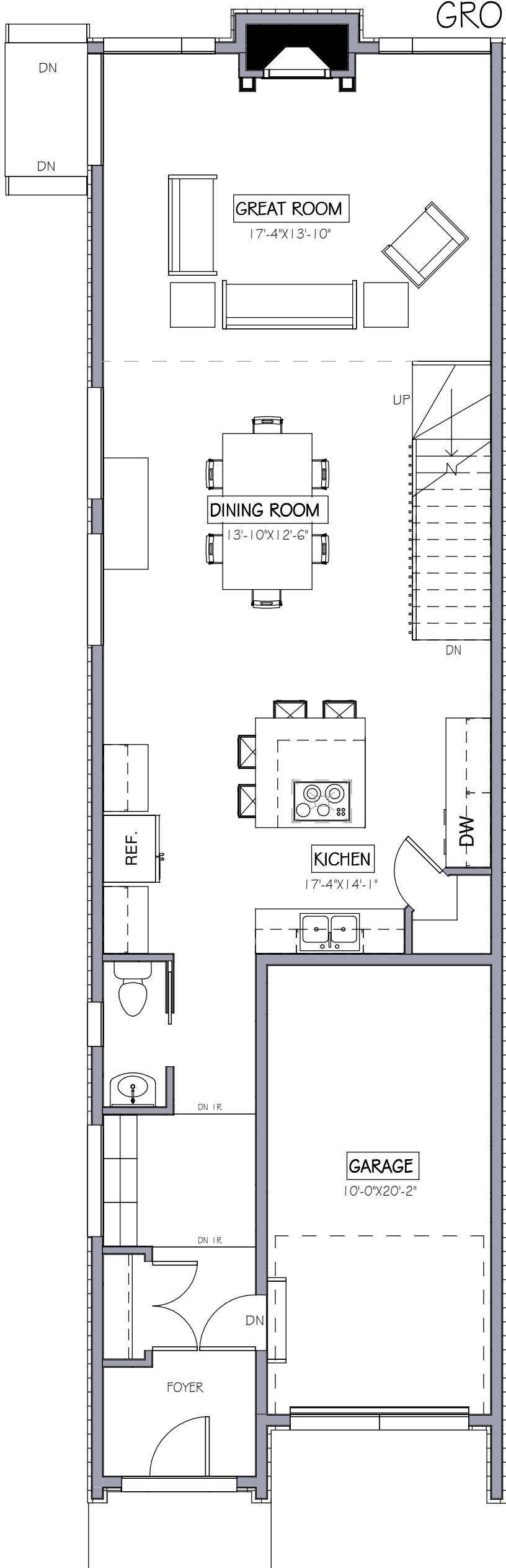
APRIL 20, 2012

ALL HOUSE RENDERINGS ARE ARTIST CONCEPTIONS. ALL FLOOR PLANS ARE APPROXIMATE DIMENSIONS. ACTUAL USEABLE FLOOR SPACE MAY VARY FROM THE STATED AREA. E & OE



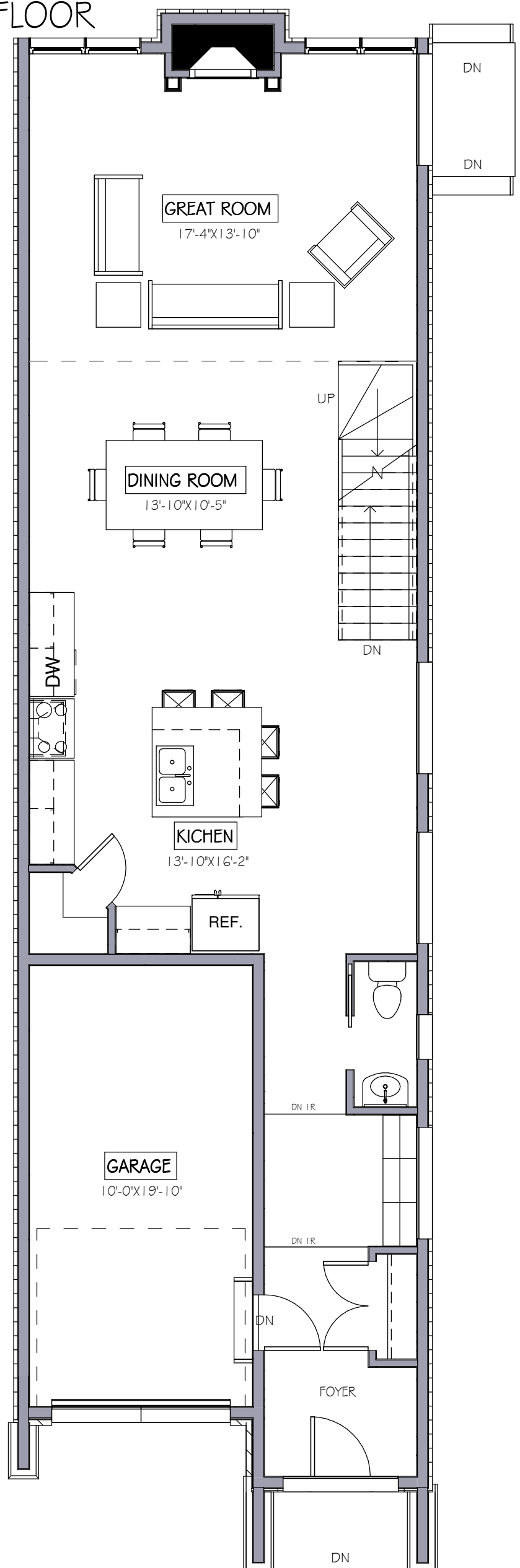
LINKED-DETACHED

GROUND FLOOR



PART 2

949 SQ.FT.



PART 1

949 SQ.FT.

APRIL 24, 2012

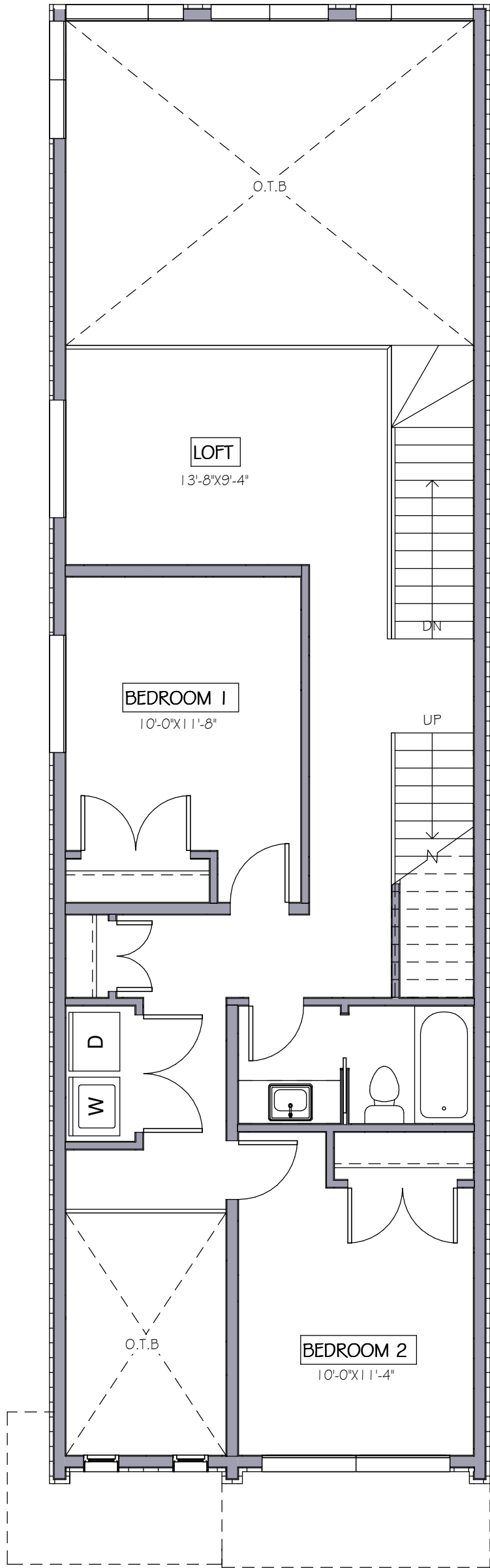
ALL HOUSE RENDERINGS ARE ARTIST CONCEPTIONS. ALL FLOOR PLANS ARE APPROXIMATE DIMENSIONS. ACTUAL USEABLE FLOOR SPACE MAY VARY FROM THE STATED AREA. E & OE



Evolution
DESIGN & DRAFTING

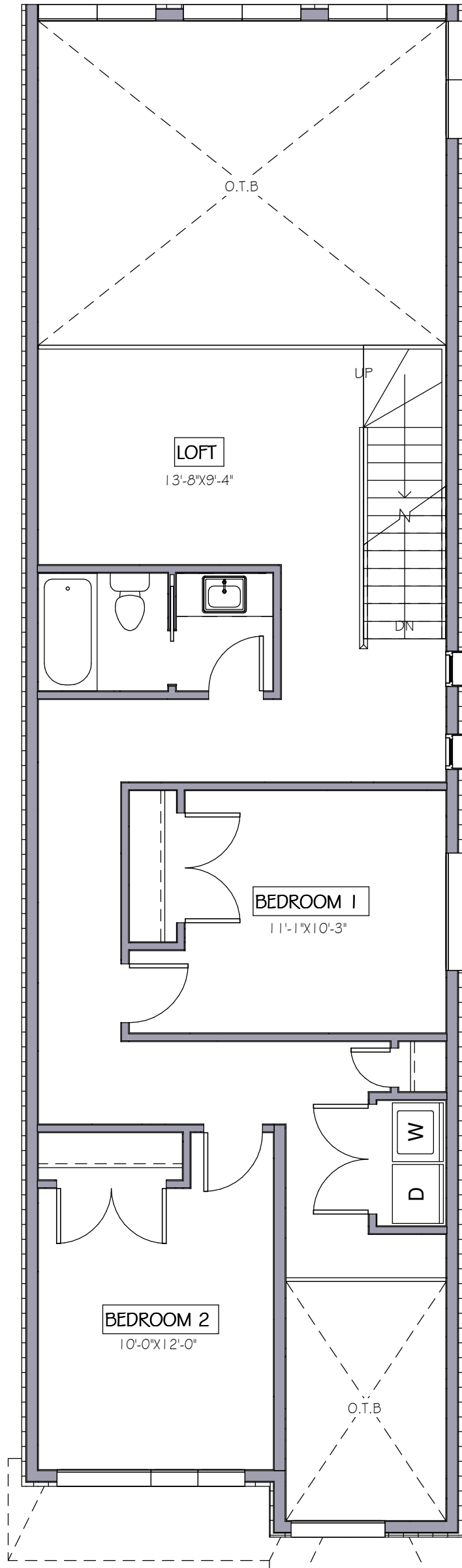
LINKED DETACHED

SECOND FLOOR



PART 2

796 SQ.FT. + 342
SQ.FT. O.T.B



PART 1

833 SQ.FT. + 347
SQ.FT. O.T.B

APRIL 3, 2012

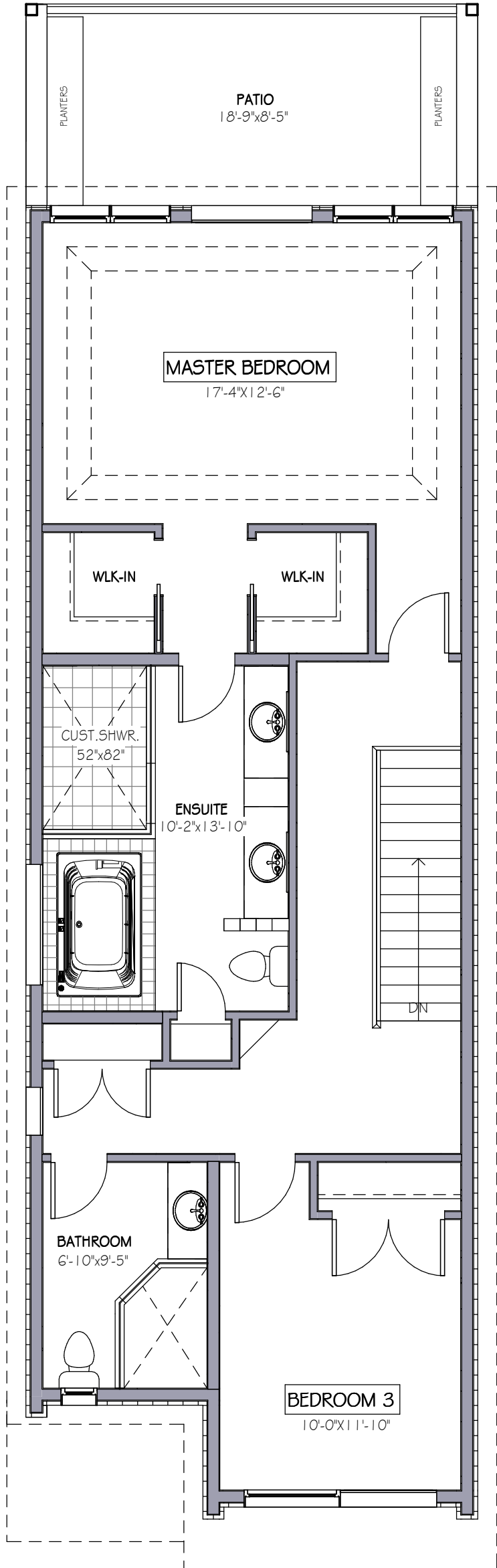
ALL HOUSE RENDERINGS ARE ARTIST CONCEPTIONS. ALL FLOOR
PLANS ARE APPROXIMATE DIMENSIONS. ACTUAL USEABLE FLOOR
SPACE MAY VARY FROM THE STATED AREA. E & OE



Evolution
DESIGN & DRAFTING

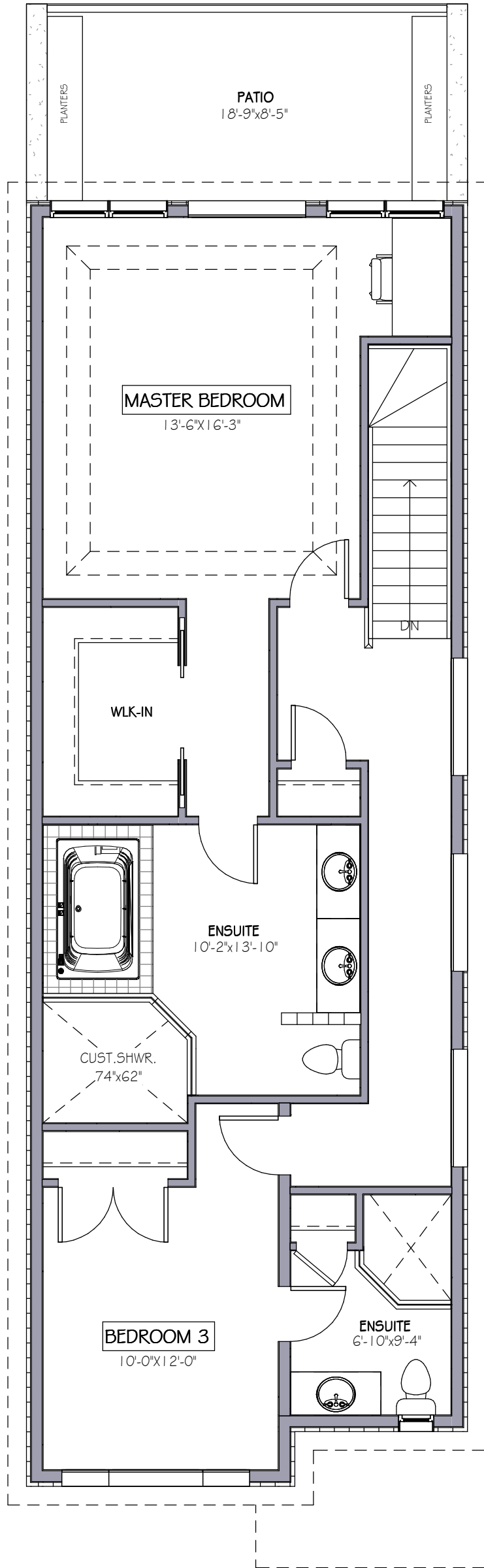
LINKED DETACHED

THIRD FLOOR



PART 2

953 SQ. FT.



PART 1

979 SQ. FT.

APRIL 3, 2012

ALL HOUSE RENDERINGS ARE ARTIST CONCEPTIONS. ALL FLOOR PLANS ARE APPROXIMATE DIMENSIONS. ACTUAL USEABLE FLOOR SPACE MAY VARY FROM THE STATED AREA. E & OE



Evolution
DESIGN & DRAFTING

LINKED DETACHED

FRONT/REAR ELEVATION



FRONT ELEVATION



REAR ELEVATION

APRIL 20, 2012

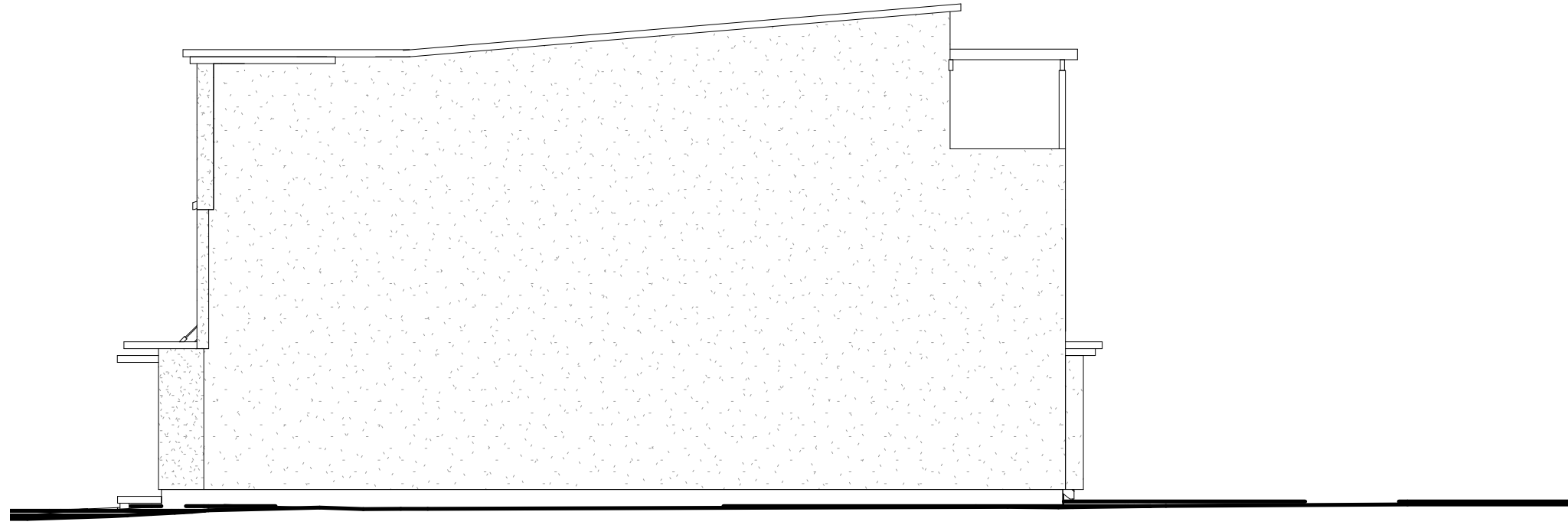
ALL HOUSE RENDERINGS ARE ARTIST CONCEPTIONS. ALL FLOOR
PLANS ARE APPROXIMATE DIMENSIONS. ACTUAL USEABLE FLOOR
SPACE MAY VARY FROM THE STATED AREA. E & OE



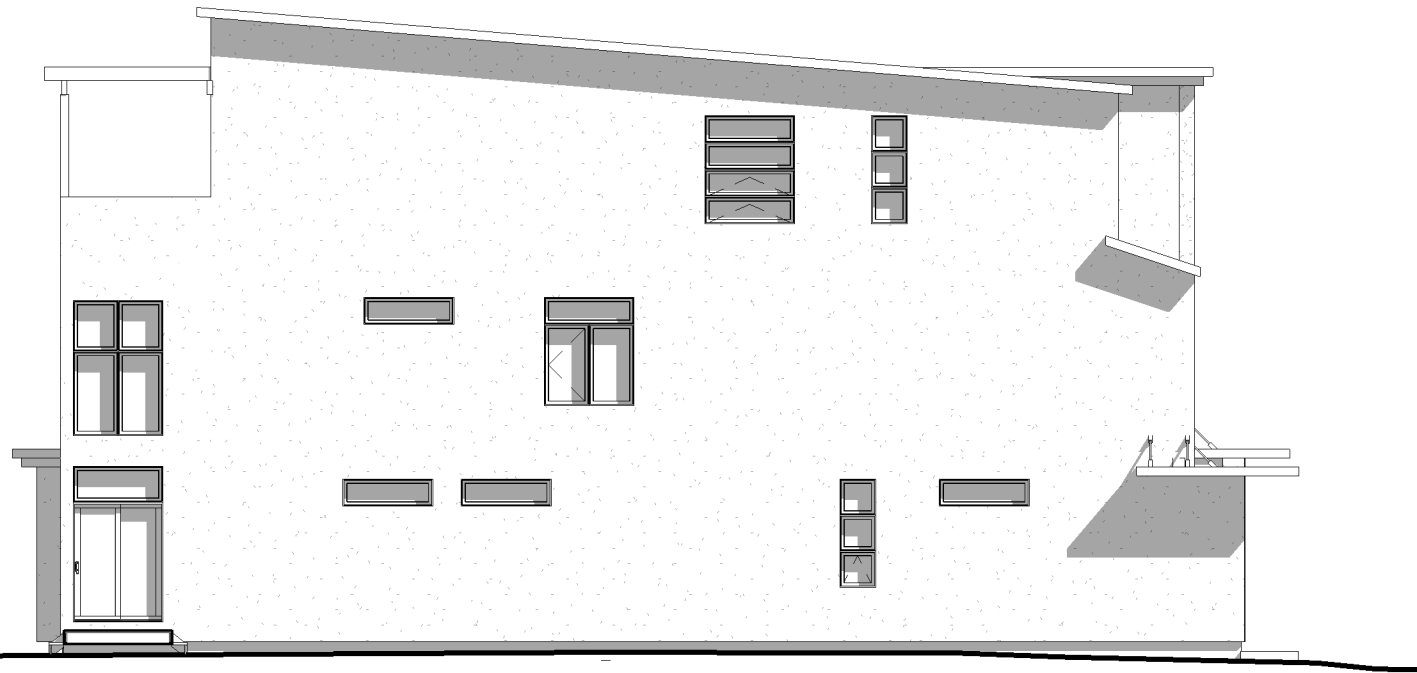
Evolution
DESIGN & DRAFTING



Evolution
DESIGN & DRAFTING



RIGHT ELEVATION - PART 2

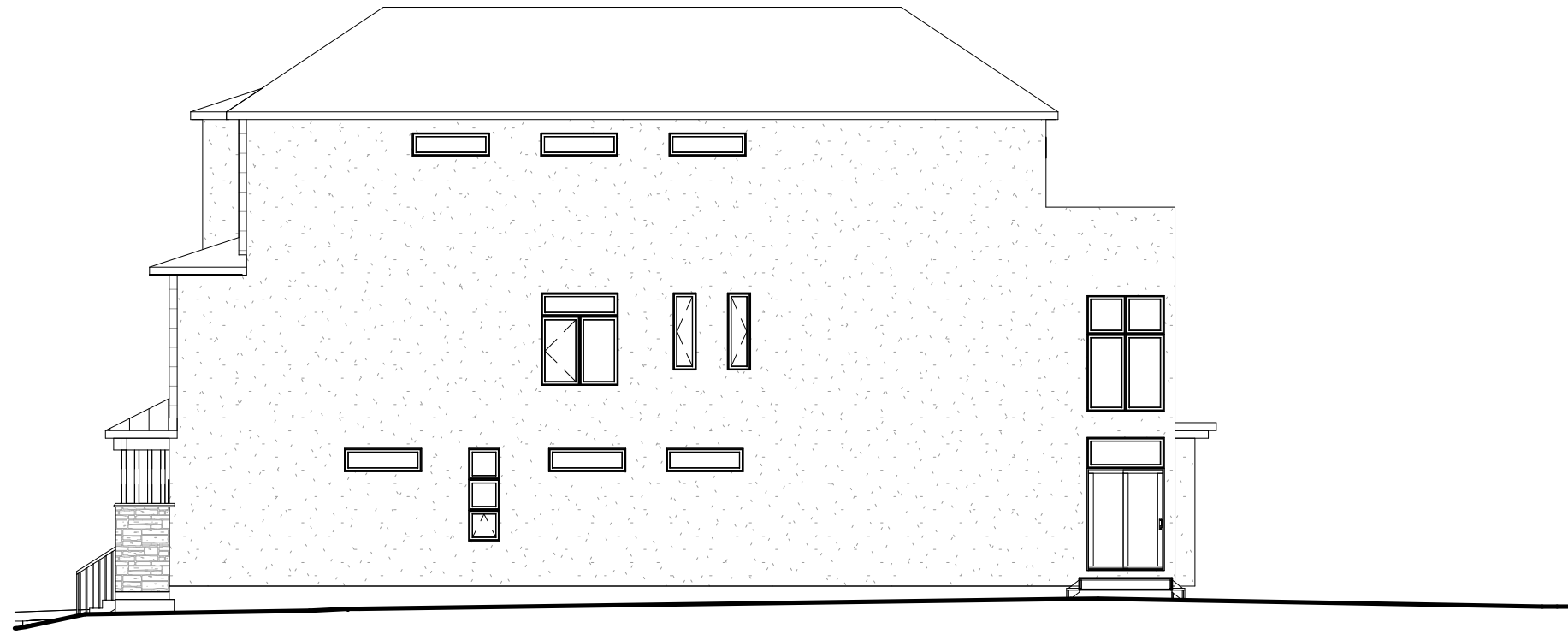


LEFT ELEVATION - PART 2

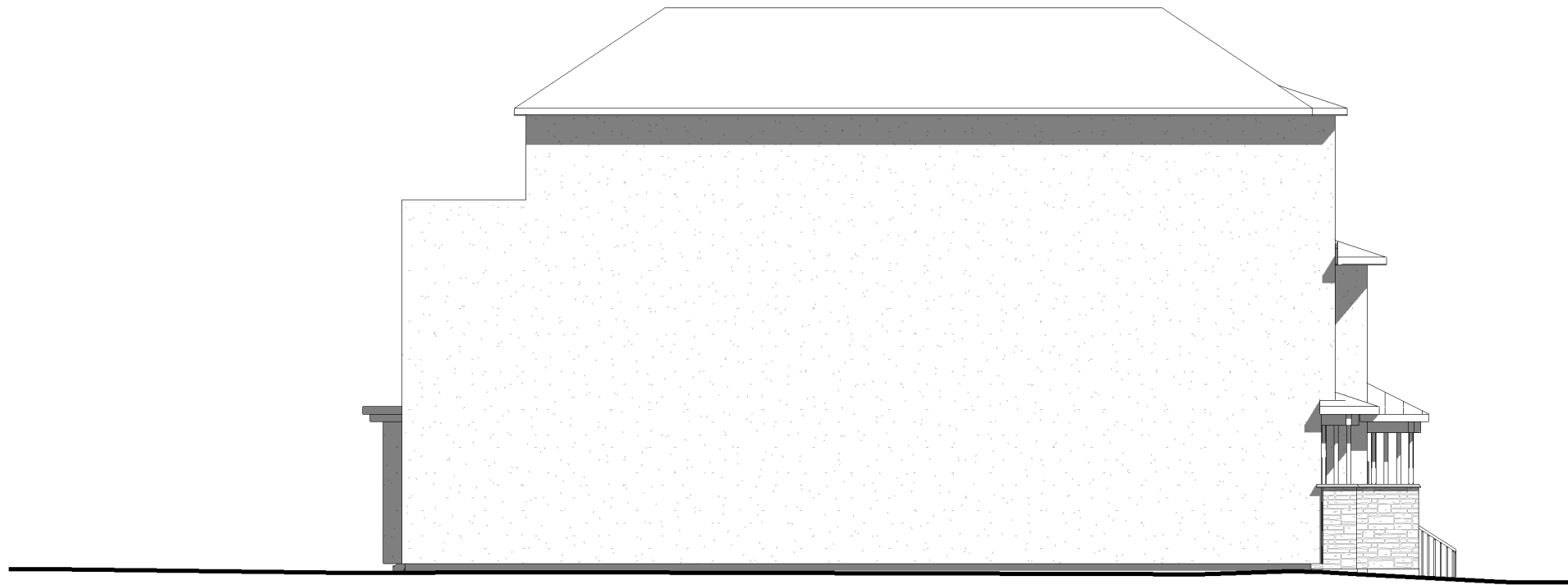
ALL HOUSE RENDERINGS ARE ARTIST CONCEPTIONS. ALL FLOOR PLANS ARE APPROXIMATE DIMENSIONS. ACTUAL USEABLE FLOOR SPACE MAY VARY FROM THE STATED AREA. E & OE



Evolution
DESIGN & DRAFTING



RIGHT ELEVATION - PART 1



LEFT ELEVATION - PART 1

ALL HOUSE RENDERINGS ARE ARTIST CONCEPTIONS. ALL FLOOR PLANS ARE APPROXIMATE DIMENSIONS. ACTUAL USEABLE FLOOR SPACE MAY VARY FROM THE STATED AREA. E & OE